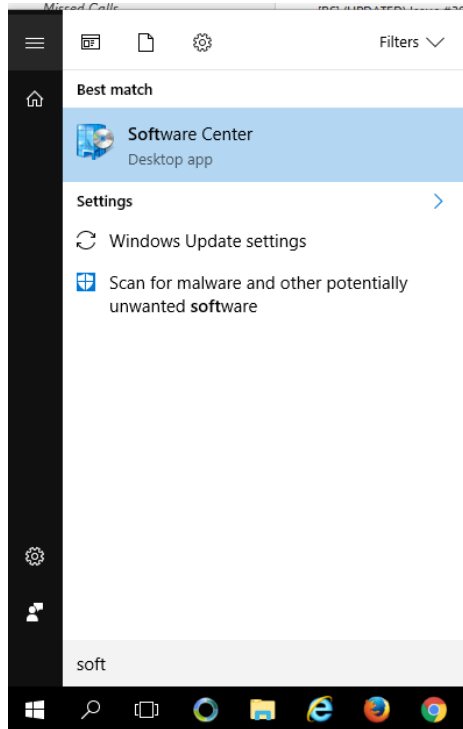


How to connect to SAFE from Windows?

Install necessary software on computer running Windows

If your Windows computer is maintained by the University of Bergen IT-department, installing Cisco AnyConnect Mobility Client is easy. Just start Software Center, by clicking on the Windows icon in the bottom, left corner and start writing “Soft...”. Soon the icon will appear as shown here:



Click on the icon to start Software Center. Software Center contains all available software and Cisco AnyConnect should be part of this list.



To install Cisco AnyConnect, just check the box to the left of the name, and click the Install button.



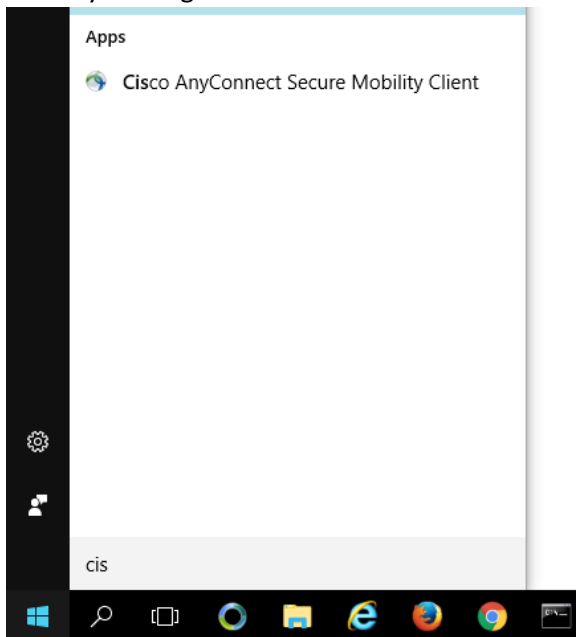
The software will normally install in a matter of seconds.

Remote Desktop is already installed on Windows computer and can be started by clicking the Windows icon and start writing the name of the application.

You now have the necessary software needed to connect to the secure desktop.

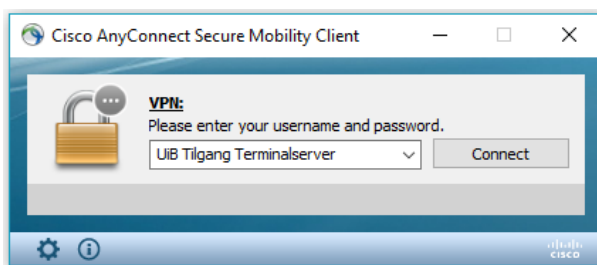
Connecting to the secure Desktop from Windows

Start by clicking on the Windows icon and starting to write “Cisco...”, the software will appear

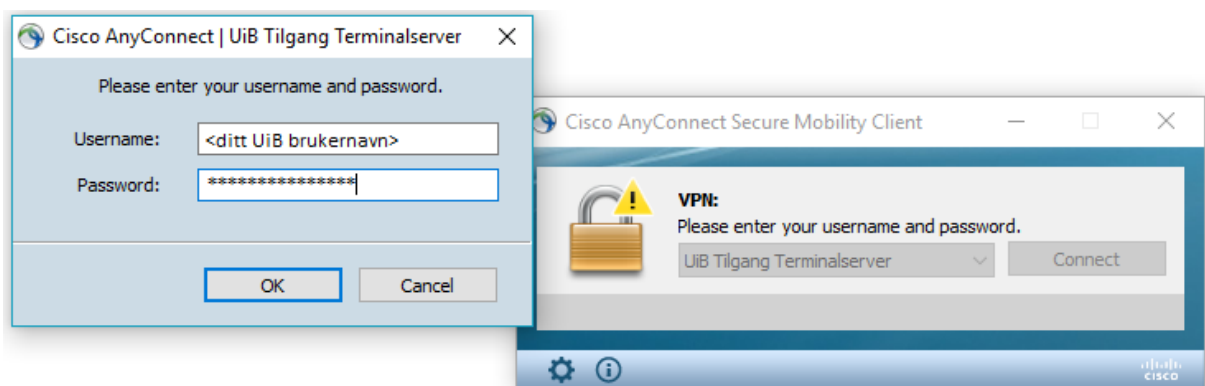


Cisco AnyConnect Secure Mobility Client shows up and you start the software by clicking on the name.

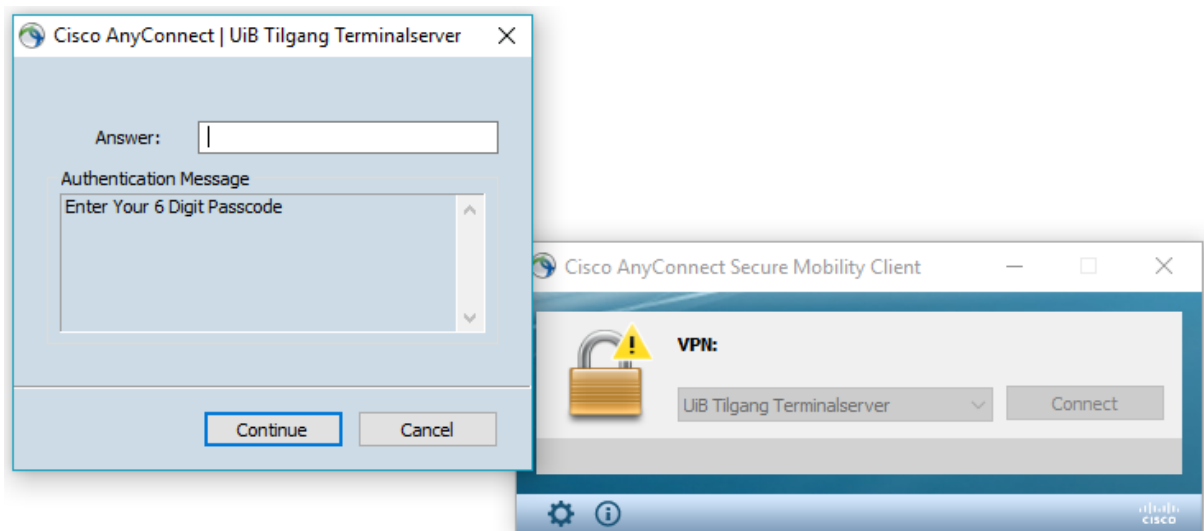
You get the following dialog box:



Once you click Connect, you will be asked for your credentials. Username and password are the same as when you log in to any IT service provided by the University of Bergen.



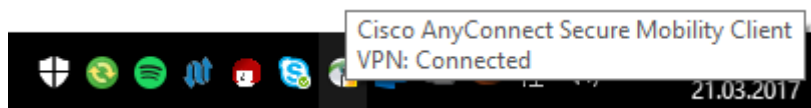
If you provide the correct credentials, you will be asked for a one-time code (6-digits).



Enter the one-time code you receive as a text message or within the SecurEnvoy app on your smart phone.

Once the correct code is entered, you are connected to SAFE and you should be able to tell by the change in the icon present on the status menu at the top of your desktop.

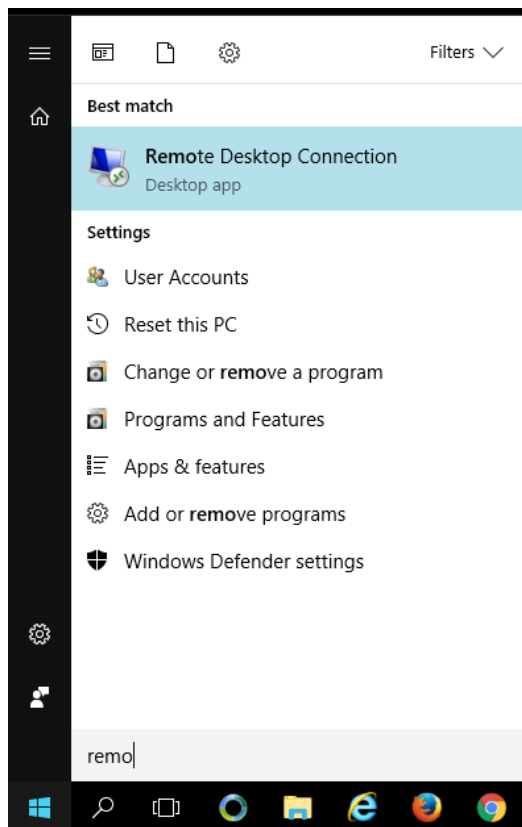
The Cisco AnyConnect Secure Mobility Client dialog box will disappear. However, a small icon will appear in the taskbar.



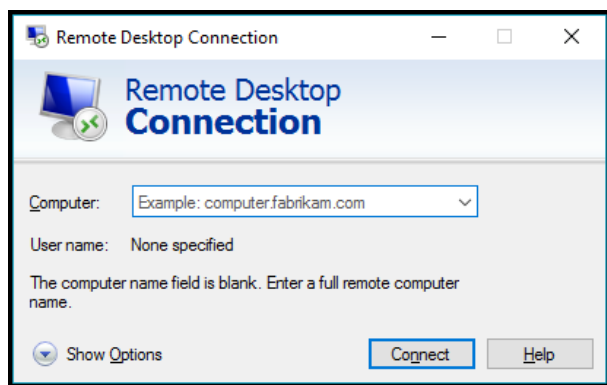
If you hover over the icon, you can see whether you are connected.

Next, you should connect to the secure desktop.

As with Cisco AnyConnect, you start Remote Desktop by clicking the Windows icon and start typing "Remo...".



Remote Desktop Connection shows up in the list as a match and you start the software by clicking on the name. You see the following dialog box:



Enter the name of your secure desktop. Normally the name will be an American city. If you do not know the name, ask the project manager.

Once you click "Connect", you will be asked for your credentials. Again, you use your standard credentials. You should lead with "uib\" before your username to ensure the correct Windows domain is used.

You are now connected to your secure desktop.